



GROW. GIVE. SERVE.

The First Fruits Farm Foundation Case for Support



About Us.

At First Fruits Farm, we believe in the Biblical principle of giving our first and best to those in need. Located in northern Baltimore County, First Fruits Farm is a nonprofit Christian organization dedicated to growing and giving fresh, nutritious food to our neighbors facing hunger through volunteer service and community partnerships. **100% of everything the Farm grows is donated—nothing is sold.** Our mission is inspired by faith and driven by a commitment to share God's blessings with others.

Our Impact.

Since its inception, First Fruits Farm has **donated more than 30 million pounds of healthy food** to food banks, shelters, schools, churches, and other nonprofits. Our Farm serves as a beacon of hope, providing not only physical sustenance but is a testament to the power of faith and community.



"For I was hungry and you gave me something to eat." - Matthew 25:35

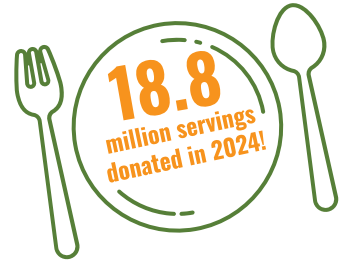


The Need.

GROW MORE – GIVE MORE – SERVE MORE... these are the driving goals of First Fruits Farm. With the demand for fresh, healthy food skyrocketing and enduring economic challenges, our partners rely on the Farm more than ever before, amplifying the urgency of our mission to provide food to neighbors in need.

Our network of distribution partners now comprises over 300 regional organizations dedicated to serving the most vulnerable in our communities. **We estimate that through this network of partners the Farm's food is feeding at least 1.5 million individuals.** Our network encompasses a blend of large and small food banks, churches, shelters, schools, and other nonprofits across the region, all of whom are committed to helping alleviate hunger in the region.

In order to sustain and grow our efforts, we need a stable and long-term source of funding.



In 2024 we...

- Increased production to **4.7 million pounds of food distributed**—including 2 million pounds grown in our fields and 2.7 million pounds of third-party donated food. The distribution center has been transformational to our operations, allowing us to receive and distribute donated food year-round.
- **Welcomed 20,238 volunteers!** In addition to the thousands of volunteers—including hundreds of schools who bring their students to the Farm for service field trips—we partnered with organizations like Kennedy Krieger, PennMar, and Trellis to provide weekly opportunities for those with developmental disabilities. We continue to expand our reach and are creating a formal partnership with Helping Up Mission to develop a program for those in the addiction community on the path to recovery.
- Raised \$2.9 million to support the Farm's operations, special projects, and endowment.
- Made improvements including renovations to the Level Acres farmhouse and began drilling for a new well.
- **Increased our distribution network to 300+ partners**—more than a 500% increase from 2020.
- Supported more than 100 organizations at Thanksgiving outreach efforts with our Operation Holiday Blessings Program—more than 461,000 pounds of food distributed.
- Provided 40,028 pumpkins to children in the region, largely at Title 1 schools, who would not have access to the festive fall staple through our Project Pumpkin.

Looking ahead to 2025...

As we begin our 27th season of blessing the hungry, the Farm aims to:

- Increase crop yield to 3+ million pounds.
- Increase our 3rd-party "Food Rescue" to 3 million pounds.
- Drill a new well to increase crop irrigation.
- Continue to serve our ever-growing network of distribution partners.

Our Vision.

To secure the future of First Fruits Farm and ensure that we can continue our mission for generations to come, we are launching an initiative to raise \$20 million for the First Fruits Farm Foundation, the Farm's endowment. This endowed fund will provide a steady revenue stream in perpetuity, allowing us to cover a significant portion of our operational costs, invest in sustainable farming practices, and grow our ability to bless more people in need.

How You Can Help.

We invite you to join us in this mission of faith and service. Your generous support will:

- ✓ **Ensure Stability.** A strong endowment will provide financial stability, allowing us to focus on our mission.
- ✓ **Expand Our Reach.** With a secure funding source, we can increase our production and reach more families in need.
- ✓ **Empower Community.** Bring together corporate, church, school and family groups in service to our mission.

Together, we can make a lasting impact in the fight against hunger. By contributing to the First Fruits Farm Foundation, you are not only providing food to those in need but also sowing seeds of hope and faith. We are deeply grateful for your consideration and support.

Thank you for being a part of our mission to feed the hungry and fulfill God's calling to serve others.



2025 Board of Directors

First Fruits Farm

OFFICERS

Richard Bernstein, President & Chair
Executive Director & Co-founder, First Fruits Farm

Jack Cavanaugh, Vice President
Partner, Brown Advisory

Mark Gardner, Secretary
Retired, Baltimore County Fire Department

David Churchill, Treasurer
Retired, COO & CFO, Brown Advisory

DIRECTORS

Joseph Arthur
Executive Director, Central PA Food Bank

Carol Bernstein
Co-founder, First Fruits Farm

Carmen Del Guercio
CEO & President, Maryland Food Bank

Aileen Eskildsen
CEO, Ellin & Tucker

Jordan Martin
PA Regional Manager, Timac Agro USA

Timothy Perry, Esq.
Chairman & Partner, Perry White Ross Jacobson

Lucy Rutishauser
EVP & CFO, Sinclair Broadcast Group

James Sellinger
Retired, Chancellor of Education,
Archdiocese of Baltimore

First Fruits Farm Foundation

Jack Cavanaugh, President/Chair
Partner, Brown Advisory

Bill Baird, Director
VP Operations, Stepstone

Richard Bernstein, Director
Executive Director & Co-founder, First Fruits Farm

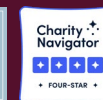
Dave Churchill, Director
Retired, COO & CFO, Brown Advisory

James Sellinger
Retired, Chancellor of Education,
Archdiocese of Baltimore

"In recent years, we made a commitment to fund the First Fruits Farm Foundation, recognizing that a strong and healthy endowment through the Foundation is key to the Farm's long-term financial sustainability, particularly as they seek to grow and further their impact."

– Earl and Darielle Linehan

For more information, contact Meghan Tapscott, Director of Development, at 410.294.9545 or meghan@firstfruitsfarm.org.



20431 Middletown Road, Freeland, MD 21053 | 410.343.2507 | firstfruitsfarm.org/foundation